

CTC

CAST IRON, STAINLESS STEEL DRAINS & INTERCEPTORS



2024

CAIRO FOR TRADING & CONSTRUCTION

CTC Products



- Grease interceptor
- Oil interceptor
- Lint Trap
- Sediment & Sand Trap
- Neutralization Tank
- Stainless Steel Trench channel
- Stainless Steel Floor drains
- Stainless Steel Cleanouts
- Cast iron drains & Trench grate



HIGH QUALITY
DRAINAGE PRODUCTS



GREASE INTERCEPTOR

Description:

- Heavy construction Ground or suspended tank that is designated to limit the amount of FOG (fat oil & grease) and solids from entering the sanitary sewer system

Application

- Any commercial facility discharging kitchen or food preparation

Size

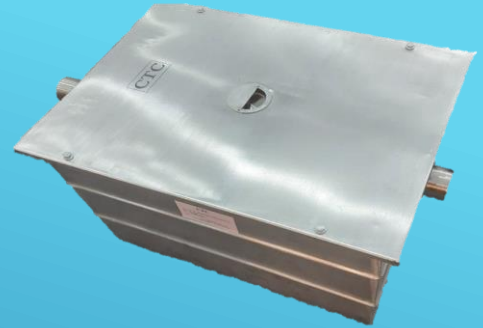
- (4/7/10/20/50/75/100/200/300/350 /400/500/1000 GPM)

Body material

- Stainless steel 304, ASTM A240

CTC

Model CT-GI-SS



Model CT-OI-SS



OIL INTERCEPTOR

Description

- Oil interceptors are designed to separate and collect oils and other light-density, volatile liquids, which would otherwise discharged into the drainage system.

Application

- An oil interceptor is required wherever lubricating oil, cutting oil, kerosene, gasoline

Size

- (4/7/10/20/50/75/100/200/300/350 /400/500/1000/2000 GPM)

Body material

- Stainless steel 304, ASTM A240 Or fabricated epoxy coated steel (ASTM A36M)



Model CT-NT-SS

NEUTRALIZATION TANK

Description

designed to dilute and neutralize the harmful chemical wastes that may be discharged from laboratories

Application

- Acid waste drainage systems for medical and research Laboratories

Size

(10, 15, 30, 50,100,200,250,300, 500 Gallon)

Body material

- Stainless steel Or Fabricated Steel (ASTM A36M)

UNDER SINK GREASE INTERCEPTOR

Application

used Under sink or above ground,

Size

- (4/7/10/20/50 GPM)

Body material

- Stainless steel 304, ASTM A240

Model CT-GI-SS-US



QUALITY DRAINAGE PRODUCTS

STAINLESS STEEL TRENCH CHANNEL

Description:

General purpose stainless steel

Application:

- 1- commercial kitchens
- 2- Bakeries
- 3- Restaurants
- 4- Food area processing

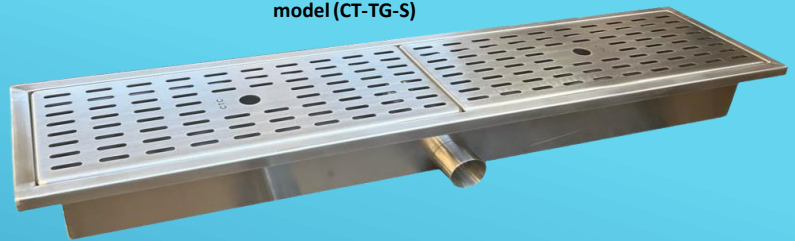
Trench drain casing size: customize made

Grate size: (20X100, 30X100, 40X100cm)

Inlet/Outlet size : (2"/3"/4"/6")

Outlet : bottom or side outlet

model (CT-TG-S)



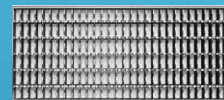
(Option 1) Trench Grate STG-2



Standard Trench Grate STG-1



(Option 2) Trench Grate STG-3



FABRICATED STAINLESS STEEL FLOOR DRAIN

Description:

general purpose stainless steel floor gully

Side outlet or bottom outlet.

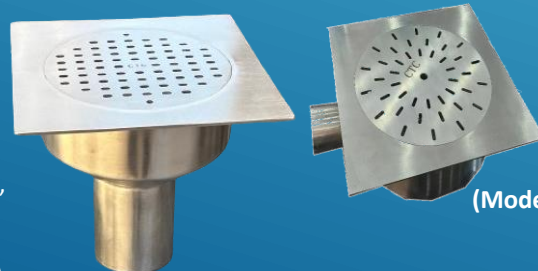
Application:

- 1- Commercial kitchens
- 2- Bakeries
- 3- Restaurants
- 4- Food area processing
- 5- Industrial applications
- 6- supermarkets



Multi Inlet

(Model CT-FDS 1)



(Model CT-FDS 2)



Grate size: (20X20, 30X30, 40X40 cm)

Outlet size: (2"/3"/4"/6")

Type of connection: No hub

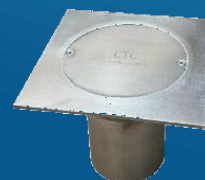
STAINLESS STEEL FLOOR CLEANOUT

Description: general purpose stainless steel

floor cleanout bottom outlet

Application:

- 1- Commercial kitchens
- 2- Bakeries
- 3- Restaurants
- 4- Food area processing
- 5- Industrial applications
- 6- Supermarkets



(Model CT-FCO-S)



QUALITY DRAINAGE PRODUCTS

GREASE INTERCEPTOR

Description

- Ground or suspended tank that is designated to limit the amount of FOG (fat oil & grease) and solids from entering the sanitary sewer system

Application

- Any commercial facility discharging kitchen or food preparation

Size

- (4/7/10/20/50/75/100/200/300/350 /400/500/1000 GPM)

Body material

- fabricated epoxy coated steel
- (ASTM A36M)



Model CT-GI-S

OIL INTERCEPTOR

Description

- Oil interceptors are designed to separate and collect oils and other light-density, volatile liquids, which would otherwise discharged into the drainage system.

Application

- An oil interceptor is required wherever lubricating oil, cutting oil, kerosene, gasoline

Size

- (4/7/10/20/50/75/100/200/300/350 /400/500/1000/2000 GPM)

Body material fabricated epoxy coated steel (ASTM A36M)



MODEL CT-OI-S

LINT TRAP

Application

used by commercial Laundromats,

Size

- (30/70/100/200/300/500 GPM)

Body material

- Stainless steel Or Fabricated Steel
- (ASTM A36M)



Model CT-LI-S

SEDIMENT & SAND TRAP

Application

used by commercial Laundromats,

Size

- (10/15/30/50/100/150/200/300/400/500 GPM)

Body material

- Stainless steel Or Fabricated Steel
- (ASTM A36M)



MODEL CT-SD-S

CAST IRON DRAINS

CTC

GARAGE DRAIN

Specification: Heavy duty garage drain consist of cast iron body with removable round slotted top cover with anti- corrosion high build epoxy coating and no hub rubber gasket connection.

Size : 2",3"4"

CT-GD-1



ROOF DRAIN

Specification: Roof drain consist of cast iron body with removable stainless steel 304/ASTM A240 top dome cover and gravel stop with anti- corrosion high build epoxy coating and no hub gasket connection.

Size : 2",3"4"

CT-RD-1-SS



SIDE ROOF DRAIN

Side roof drain consist of cast iron body with removable stainless steel 304/ASTM A240 grate cover with anti- corrosion high build epoxy coating and no hub gasket connection.

Size : 2",3"4"

CT-SRD-1-SS

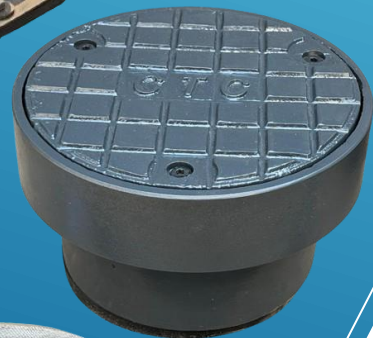


NON-ADJUSTABLE CAST IRON FLOOR CLEANOUT

Specification: Heavy duty floor cleanout consist of cast iron body with non-adjustable round engraved top cover and clean out plug with anti- corrosion high build epoxy coating and no hub gasket connection

Size : 2",3"4"

CT-FCO-2



PLANTING DRAIN

Specification: Planting drain consist of cast iron body and gravel stop painted with anti- corrosion high build epoxy coating with removable stainless steel AISI 304 top dome cover and AISI 304 stainless steel mesh screen connected with no hub rubber gasket.

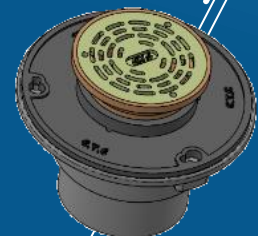
Size : 2",3"4"



FLOOR DRAIN

Specification: floor drain consist of cast iron body with removable round slotted adjustable stainless steel 304/ASTM A240 top cover with anti- corrosion high build epoxy coating and no hub rubber gasket connection.

Size : 2",3"4"



CAST IRON DRAINS

FUNNEL FLOOR DRAIN

Specification: floor drain consist of cast iron body with removable round slotted adjustable stainless steel 304/ASTM A240 top cover with anti- corrosion high build epoxy coating and no hub rubber gasket connection and cast iron funnel.

Size : 2",3"4"



Model. CT-FFD-1

SS DOWN SPOUT NOZZLE

Specification: Down spout nozzle consist of stainless steel 304/ASTM A240 body and removable flange with

Size : 2",3"4"

Model CT-DSP-SS-1

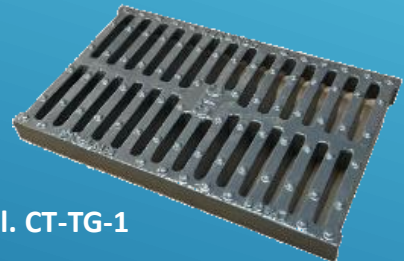


CAST IRON TRENCH GRATE

Specification: Heavy duty trench grate top cover with anti- corrosion high build epoxy coating.

Size : 6",8",12"

Model. CT-TG-1



SS DOWN SPOUT NOZZLE

Specification: Down spout nozzle consist of Stainless steel 304, ASTM A240 body and fixed flange with No hub connection.

Model CT-DSP-SS-2



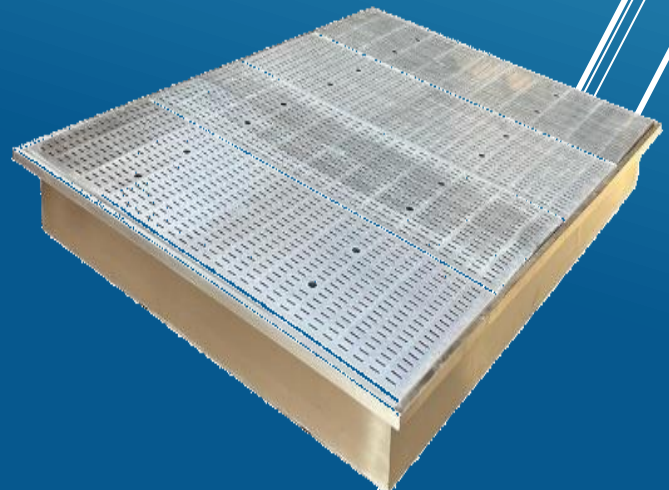
SS LARGE VOLUME FLOOR SINK

Specification: large volume floor sink
Stainless steel 304, ASTM A240.

Grate size: (100X100, 150X100,200X150 cm)

Outlet size: (2"/3"/4"/6")

Type of connection: No hub



DP WORLD 

Project : DP world
Consultant : Cosmos
Contractor : Rowad

marassi 

Project : Marassi
Consultant : EMAAR
Contractor : ACC



Project: Madinaty
Consultant : ECG
Contractor : Alex Const



Project : MALL OF ARABIA
Consultant : MARAKEZ
Contractor : PappaRoti Cafe



Project: Mall of Tanta
Consultant : RMC
Contractor : Gama Const.



Project : EMAAR
Consultant : EGEN
Contractor : Gama Const



Project: Berenice International Airport
Consultant : ECG
Contractor : Hassan Allam Tech



Project : Mall of Tanta
Consultant : RMC
Contractor : Gama Const.

ELARABY

Project: ELARABY
Consultant :Ark Plane
Contractor :Korra Energi



Project : Assiut Power Station
Consultant:
Contractor : ORASCOM

SODIC

Project : SODIC
Consultant : GEC
Contractor : ECS



Project : Elite Hospital
Consultant: Dr.WalidabdelGaffar
Contractor : El Shark



MARASSI MARINA YACHT CLUB

Project : MARASSI MARINA
Consultant : ECG
Contractor : Khorafi National



CAPITAL
INTERNATIONAL
UNIVERSITY

Project :
CAPITAL UNIVERSITY INTERN



M A R A K E Z

Project : MARAKEZ
Consultant :
Contractor :



telecomegypt WE

Project : Telecom Egypt Club
Consultant : Ehaf
Contractor :



Project : LULU market
Consultant: Pioneer
Contractor : El Masria



مؤسسة مستشفى سرطان
الأطفال - مصر
Children's Cancer Hospital
Foundation - Egypt

Project : 57357



Project : AEON
Consultant: ECG
Contractor : Hassan Allam



Project : Seat & Skoda
Consultant : mep consultant
Contractor : Arcamax



Project : GOLF CENTRAL
Consultant: Mep CONSULTANT
Contractor : solid Egypt



Project : Madinaty
Consultant: ECG
Contractor : Alex Constr.



Project : Neurocare Hospital
Consultant: Pojacs CONSULTANT
Contractor : El Shark



Project : H-B FULLER
Consultant: COSMOS
Contractor: Watania
for Trading and Contract.



GET IN TOUCH

 0102 163 0604

 0102 163 0604

 info@cairoctc.com

 Tech@cairoctc.com

 2047 EL-Meeraj- Maadi, Cairo